

eliminating racism
empowering women
ywca
northcentral pa

YWCA NORTHCENTRAL PA

ANNUAL REPORT
2020 - 2021



LETTER FROM OUR CEO & BOARD PRESIDENT

We are stronger together!

This past fiscal year has been a year of tremendous challenges, opportunities, and successes. Despite the circumstances, we have risen to the occasion, moving forward with determination to serve our mission to eliminate racism and empower women in everything we do. We could not have accomplished all that is shared within our report without you. We're proud of what we've achieved together.

In our previous annual report, we shared our desire to begin renovating our 70,000 square foot building with, "A Million Opportunities Campaign." A BIG thank you to the donors and funding organizations that have made some of those dreams a reality. With their generosity we have begun repurposing space to better serve those seeking our services. For example, we now have a new roof over our back entrance, updated signage, a welcome office, an intake meeting room, renovated kitchen, two updated playrooms and a new outdoor pavilion. With so much more to be done.

We are proud to share our Fiscal Year 2020-2021 Annual Report and we hope you see the impact and the contributions you personally have made to our success. This past year has been a year of challenges and growth. As we learn, adapt, and move forward, our board and staff are truly dedicated to ensuring the communities' needs are met in new and innovative ways whether that be in-person or virtually.

We are grateful for the programs and services we offer to our Lycoming County neighbors and for those who have helped get us where we are. As we begin to explore new opportunities, face new challenges, and look for new connections, we know that with all of us working together we will be stronger together. We hope you will join us, once again, on this journey so that those we serve will have access to the tools and the resources, coupled with their own strengths, to ensure they are as successful as they can be.

Together on a mission,



DAWN LINN

CEO



ALLISON STAIMAN

Board President

YWCA BOARD LEADERSHIP

BOARD OF DIRECTORS

Allison Savoy-Staiman, President

Jo-Ann Gorski, Past President

Amanda Wright, Vice President

Molly Steele-Shrimp, Secretary

Suzette Meyer, Treasurer

Stefanie Allison

Kristen Avery

Page Bingham

Ashley Bogart

Rachael Clark

Megan Clark

Megan Dayoff

Nicole Ippolito

Joann Kay

Sue McCusker

Jenny Picciano

Jennifer Roy

Vanessa Slaughter

Laura Smith

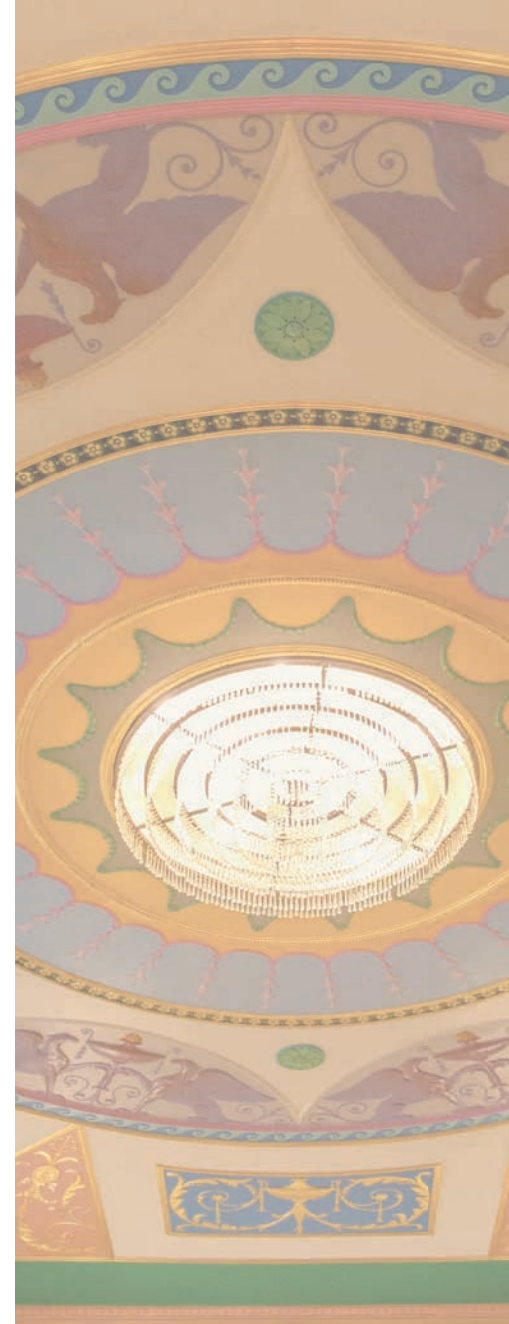
Diane Stanzione

Casey Stopper

Alma Verzella

Kathy Brown-Wehr

Cheryl Yoxtheimer



BOARD OF TRUSTEES

Jessica Bower

Deb Bowes

Doreen Decker

Keith Kuzio

Diane Page

Frank Pellegrino

Margaret Piper

Marshall Welch

Walt Rau

Julieanne Steinbacher

Carolyn Strickland

Barbara Wascher

Margery Wurster

Karen Young

Dr. Todd Fausnaught

LEADERSHIP

Packed with a range of skills and many years of experience, this team shares the vision and values of the YWCA's mission to Eliminate Racism and Empower Women. They are driven by the idea that the best work comes from consistency and diligence, mixed with fun and positivity.

Staff



DAWN LINN
CHIEF EXECUTIVE OFFICER



STEVE PARLANTE
CHIEF FINANCIAL OFFICER



AMBER MORNINGSTAR
PROGRAM DIRECTOR



BRITTANY FISCHER
COMMUNICATIONS & DEVELOPMENT DIRECTOR

SUPPORT STAFF

From office management and human resources to report tracking and marketing, the support team works hand-in-hand with the entire YWCA team on a daily basis to ensure efficiency and productivity are always at the forefront.

Staff



MONICA WHITMOYER
OFFICE MANAGER/BOOKKEEPER



MOLLY MANN
ADMINISTRATIVE ASSISTANT



BETH MCCLAIN
COMMUNICATIONS & MARKETING SPECIALIST



KAHLIE DEHOTMAN
THE BOUTIQUE MANAGER

FACILITIES

Our facilities team make sure our building continues to provide the best service to fellow staff, residents, and clients. From small electrical issues, to installing various equipment, regular maintenance and cleaning, these employees are crucial to keeping our building running for many more years to come.

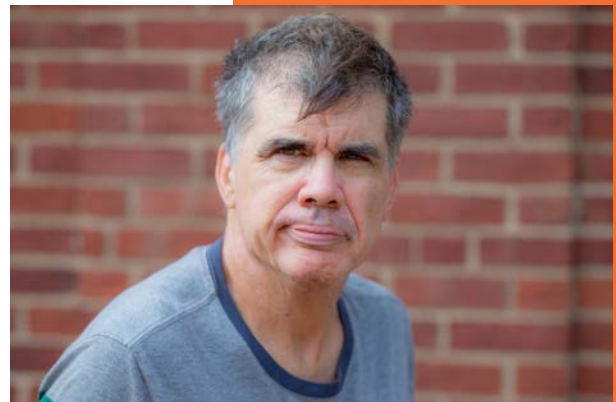
Staff



DAVID RICKARD
FACILITIES DIRECTOR



DEREK DUPREE
MAINTENANCE



RON AULT
MAINTENANCE

YWCA PROGRAMS

LIBERTY HOUSE

YWCA Northcentral PA's Liberty House Program is a permanent supportive housing solution for individuals and families who are experiencing homelessness coupled with a disabling condition, as defined by the Department of Housing and Urban Development (HUD). Since 2003, Liberty House has been committed to providing safe and stable community-style living, allowing residents the opportunity to regain independence, rebuild relationships, and empower themselves and each other to overcome their circumstances. The YWCA's Liberty House takes on the challenge to help break the cycle of homelessness and support residents as they achieve self-sufficiency.

Staff



JERNAE DRUMMOND
HOUSING SERVICES SUPERVISOR



DEBRA GRIFFIN
LIBERTY HOUSE CASE MANAGER



TEMPEST BARNES
LIBERTY HOUSE CASE MANAGER



SHRYL WHITESSELL
LIBERTY HOUSE CASE MANAGER

KEY ACCOMPLISHMENTS FROM LIBERTY HOUSE

61 Adults & children were provided with supportive services and case management in their time of need.

5,000 More than 5,000 hygiene items were provided to individuals experiencing homelessness in the community through our Huts of Hope.

58 Individuals and families successfully exited into their own home outside of the YWCA.

5,113 YWCA's Liberty House provided 5,113 days of safe shelter for individuals and families during the 2020-2021 fiscal year.

2 Two Liberty House residents studied for their drivers license exam on their journey to mobile independence with the help of a YWCA volunteer and board member.



Sharon's Story

A LIBERTY HOUSE SUCCESS STORY

After incarceration, severed relationships with her family, and near-death experiences, Sharon arrived at the YWCA's Liberty House program at the lowest point in her life.

Introduced to drugs at the tender age of 14, Sharon spent years struggling with addiction and trauma. She turned to Liberty House for reprieve and restoration.

Fast forward to date, Sharon celebrates 18 months of freedom! Freedom from addiction, abuse, and toxic behaviors. She describes herself as a work in progress. Each day she uses the vital tools she has learned during her stay at Liberty House. She is careful of her decision-making, boundaries, and the company she keeps. Today, Sharon holds full-time employment, chairs support groups for women like herself, has gained the trust and support of her family again, and will be moving into her own home! She expresses, "Liberty House saved my life!" At age 56, the past 18 months of sober living is her longest stretch of sobriety.

Residents like Sharon prove the importance of our lifesaving work at the YWCA's Liberty House program.



LASTING IMPRESSIONS

"Liberty House saved my life!"

- LIBERTY HOUSE RESIDENT

"Liberty House gave me and my son a safe and secure place to live."

- LIBERTY HOUSE RESIDENT

"Liberty House is all about second chances and how you take advantage of it."

- LIBERTY HOUSE RESIDENT



Ally's Story

According to the CDC, during the short 4-year span between 2011 and 2015, alcoholism was responsible for a yearly average of 95,000 deaths. Liberty House resident, 29-year-old Ally, recognizes she was nearly one of those statistics. After being diagnosed with pancreatitis related to her excessive alcohol usage, Ally decided to save her own life. She stumbled into the YWCA's Liberty House program with just the clothing on her back where she walked into a welcoming community of support from women who were battling similar demons and Case Managers who cared. With the resources and help of the Liberty House program, she is now seven months without alcohol. Her goal is to resume her nursing career, but for now, she is focused on nursing herself back to good health. The YWCA Liberty House aids many women like Ally each year, women ready to rebuild their lives.

YWCA PROGRAMS

WISE OPTIONS

YWCA Northcentral PA's Wise Options Program is designed to meet the needs of survivors and their children whose lives are affected by violence. All services are confidential, free of charge, and can be accessed by calling our 24/7 crisis hotline at 1-800-326-8483.

Since 1977, Wise Options has provided a comprehensive victim service center to Lycoming County. Wise Options services are offered to survivors who have experienced, witnessed, or had a family member involved in domestic violence, sexual violence, or other violent crimes. Services range from secure emergency shelter for survivors and their children fleeing violence, to community-based services, advocacy, and support.

Staff



HEATHER REEDER
DIRECT SERVICES SUPERVISOR



ERIN SCHOLL
ADVOCACY AND PREVENTION SUPERVISOR



AMY BOWER
LEGAL ADVOCATE



DEBRA SMITH
SHELTER ADVOCATE

YWCA PROGRAMS

WISE OPTIONS

Staff



KIERSTIN MILLER
VICTIM ADVOCATE



JENNIFER SWANSON
PREVENTION EDUCATOR



JEN REYNOLDS
SHELTER ADVOCATE



REBECCA HOSIER
MEDICAL ADVOCATE



GRACE MANEVAL
HOUSING ADVOCATE



KATHRYN KEISER
SHELTER ADVOCATE

YWCA PROGRAMS

WISE OPTIONS

Staff



MACKENZIE FINN
CHILD & ADULT COUNSELOR



DELVONNE WILLIAMS
CHILD & ADULT COUNSELOR



STEPHANIE ZABALLERO
SHELTER ADVOCATE

NOT PICTURED
AMY GETZ
SHELTER ADVOCATE

Emma and her three children are former shelter residents of the YWCA's Wise Options program. They have found solace within the emergency shelter off and on for three years. Emma suffered physical and financial abuse at the hands of her abuser. During each stay in the Wise Options program, Emma received counseling, legal advocacy, and financial assistance. However, Emma struggled to leave her abuser for good due to the financial burden of being a single mother. With the support from our advocates, Emma discovered her passion for fashion. She pursued obtaining her LLC, which allowed her to open an online shoe Boutique. Emmas' online store created enough revenue for her to escape her abusive relationship for good. Emma is free from abuse and caring for her own home with her children.

KEY ACCOMPLISHMENTS FROM WISE OPTIONS

5,508 The Wise Options program provided 5,508 nights of safe shelter to adults and children fleeing violence.

182 Six children across five families in sensitive situations participated in the YWCA's Custody Exchange Program to ensure their custody exchange posed no danger to themselves or their children. A total of 182 exchanges were made in 2020-2021.

550 This past fiscal year, Wise Options Legal Advocates screened a record of 550 individuals for Protection from Abuse (PFA) Orders.

1,333 Wise Options offered life-saving services to 1,119 survivors of Domestic Violence, 116 survivors of Sexual Assault, and to 98 individuals experiencing victimization other than domestic or sexual violence.

15 Individuals and families were served by the Rapid Rehousing Project to offer secure housing as they fled a domestic violence situation.

1,646 Despite COVID-19 restrictions over the last year, 1,646 individuals were provided with awareness and prevention education in Lycoming County. Available educational topics include healthy relationships, violence prevention, and bystander intervention, to name just a few.

A Bright Future Awaits

A WISE OPTIONS CLIENT SUCCESS STORY

In the beginning, I was referred to the Wise Options program after contacting the police during a horrific verbal altercation. I had experienced verbal, emotional, and psychological abuse from my father. I had nowhere to go and entered the emergency shelter. The staff in Wise Options were helpful as I processed the pain I had endured. I was informed by the shelter advocates that I was able to obtain a Protection From Abuse order. I was very uncomfortable at first, but the staff were very welcoming. I felt more at ease once the advocate explained the process and the court date was scheduled. The staff made sure I didn't feel alone and kept my focus on the bright future that could await me. Once the steps were put into place, I was then given the date for my first hearing. A YWCA Legal Advocate met me at the courthouse to conduct the first hearing and stayed with me through the entire process. The Protection From Abuse order was then granted at the temporary level and my sense of safety was restored until the final court hearing. The YWCA then helped me obtain a pro bono attorney through North Penn Legal Services; the attorney advocated for me to ensure justice and safety. The attorney was very understanding, honest, and helpful through the last parts of the process. My final protection order was granted, which ensured my safety for a longer duration. I felt such a relief that assistance like this is available in our community. I have since moved into my own apartment and am beginning to build a new life free from abuse. The staff from Wise Options helped and are definitely beneficial. I am very grateful.

- WISE OPTIONS CLIENT



“The staff made sure I didn't feel alone and to look at the bright future that could await me.”

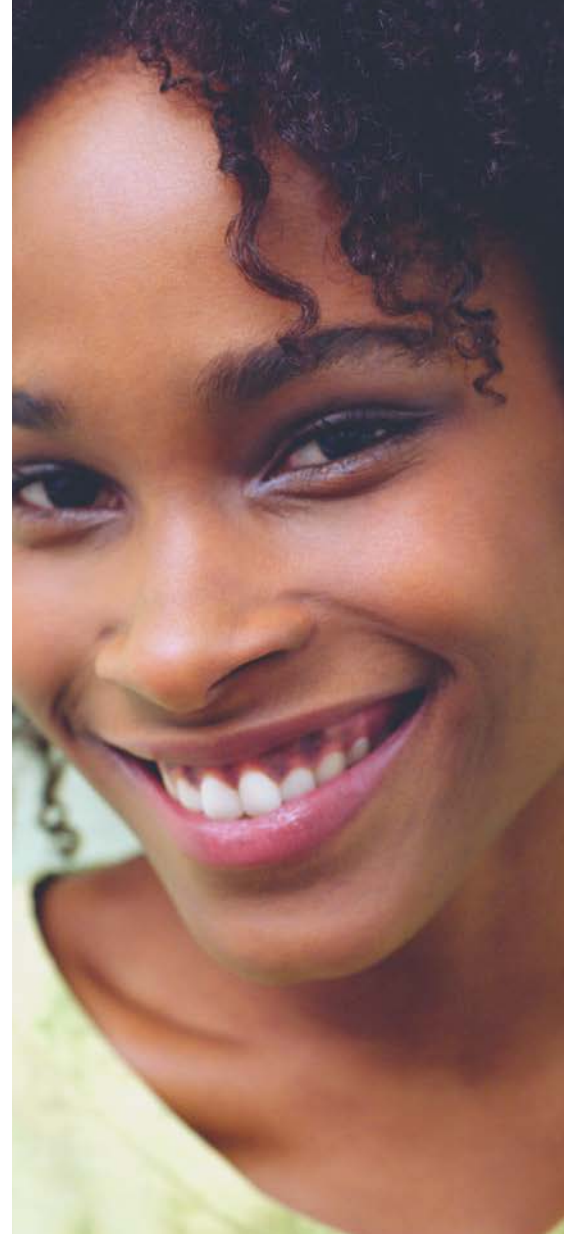
LASTING IMPRESSIONS

"Court cases were frightening. I always expected the worst, but when I saw the ladies from Wise Options standing there, I was given hope."

- WISE OPTIONS CLIENT

"You're scared and broken down, but these ladies at Wise Options are here to rebuild what you were. They made me feel as if I was the only person they were taking care of."

- WISE OPTIONS CLIENT



“ GETTING OUT OF AN ABUSIVE RELATIONSHIP IS NOT EASY. BUT I WAS SUPPORTED THE ENTIRE WAY BY THE WISE OPTIONS STAFF. FROM THE INITIAL APPOINTMENT, TO THE HEARING GRANTING ME THE TEMPORARY PROTECTION FROM ABUSE ORDER, THE HEARING FOR THE FINAL PROTECTION FROM ABUSE ORDER AND ULTIMATELY A CONTEMPT HEARING. I FELT SUPPORTED AND COMFORTED BY THE WISE OPTIONS STAFF, WHICH INCLUDED A LEGAL ADVOCATE AND A COUNSELOR. KIERSTEN AND GRACE WERE WITH ME THROUGH THE ENTIRE PROCESS, LETTING ME KNOW WHAT I COULD EXPECT AND WHAT MY OPTIONS WERE AT EVERY STAGE OF THE PROCESS.

THERE WAS NO JUDGEMENT AND THEY WERE AVAILABLE TO ANSWER QUESTIONS AND PROVIDE COUNSELING SERVICES TO ASSIST MY FAMILY. I CAN'T THANK THEM ENOUGH.

- WISE OPTIONS CLIENT



WE REMEMBER

EACH OCTOBER, THE YWCA NORTHCENTRAL PA HOSTS A VIGIL OF REMEMBRANCE AND HOPE TO HONOR THE LIVES LOST TO DOMESTIC VIOLENCE IN LYCOMING COUNTY DURING DOMESTIC VIOLENCE AWARENESS MONTH.

DOLORES "DEE" WILSON
3/22/1954 - 6/23/1996

KALIB NASH BLASÉ
4/30/1997 - 4/30/2002

KRISTINA POPE
12/12/1992 - 7/7/2015

JENIFER MARIE POWELL
6/17/1976 - 9/30/1997

TRACI L. WERTZ
6/30/1970 - 8/11/2004

MICHELLE INCH
2/8/1984 - 1/26/2016

JENNIFER WITMER
4/11/1965 - 1/18/1998

MELANIE SEITZER- SALGADO
11/7/1969 - 9/25/2004

SCOTT "SCOTTY" M. COLE
6/15/1981 - 6/22/2017

TRAMAINÉ M. GLISSON
3/22/1978 - 6/12/1999

CHRISTINE MONTGOMERY
6/3/1972 - 3/23/2005

SONJA M. HECK
3/2/1969 - 8/16/2018

MIRIAM ZAMBIE ILLES
4/15/1951 - 1/15/1999

CHERYLYN KEPHART
8/1/1974 - 2/21/2013

LUKE A. BEATTY
6/5/1993 - 8/25/2018

SUSAN YASIPOUR
8/28/1996 - 8/24/2001

LYNN WRIGHT
5/25/1960 - 10/25/2013

KRISTIN PAIGE WALTERS
3/24/1990 - 3/3/2020

STEPHANIE SEES
2/15/1970 - 6/13/2002

24/7 Crisis Hotline
1-800-326-8483

If you or someone you know have experienced abuse, call the Wise Options 24/7 hotline. The YWCA Northcentral PA offers free and confidential services 24 hours a day, 7 days a week. Trained staff and volunteers provide immediate support and information to individuals fleeing violence or experiencing homelessness.

YWCA AWARENESS MONTHS

TEEN DATING VIOLENCE

Every February, young people and their loved ones join together across the country for a national effort to raise awareness about the issue of teen dating violence through Teen Dating Violence Awareness Month (TDVAM). This annual, month-long push focuses on advocacy and education to stop dating abuse before it starts.

The YWCA hosts educational sessions, events, and distributes promotional materials to educate parents, teens, and educators on the sensitive issue of teen dating violence prevalent within our community.

SEXUAL ASSAULT

During April, activists and advocates raise awareness about sexual violence and educate communities and individuals on how to prevent and respond. Partnering with the local community, prevention education sessions are provided within juvenile placement facilities, schools, and organizations to prevent first time perpetration and initiate a community of effective response. The YWCA's goal for April is to promote a community that supports survivors of sexual violence and ensures justice. This April, the YWCA held its first annual "Supporting Victims, Building Trust, Engaging Communities." Through this event we were able to reach the community on a larger scale, raising awareness that Lycoming County will support survivors and ensure justice.

DOMESTIC VIOLENCE

Each year October is acknowledged as Domestic Violence Awareness Month. It provides an opportunity to remember victims of domestic violence, raise awareness of what domestic violence is, how to recognize it, and what we can all do to collectively prevent it. The YWCA educates the community to activate bystanders and share information that can help those who are experiencing violence. Various community events and education sessions are held each October, in honor of those who have lost their lives due to domestic violence in Lycoming County.

HOMELESSNESS

As the basic act of obtaining a home becomes more difficult, the cry for action echoes louder than ever before. During November, the YWCA raises awareness of the issue of homelessness in our communities in effort to help change the conversation about stereotypes, improve policy, help service providers, and so much more. For the last 2 years, the YWCA has installed Huts of Hope within the community that serve as a free and accessible hub to obtain hygiene items as available and needed. One hut is near Hepburn Street Plaza and the other is located in front of the YWCA. We plan to grow this initiative and engage communities to partake in supplying items and maintaining stock. Furthermore, the YWCA hosts community events, distributes awareness materials, and conducts street outreach to those experiencing homelessness.



YWCA SPECIAL EVENTS



SEPTEMBER 19, 2020



In September, we proudly hosted our 3rd year of Over the Edge, the thrilling and highly anticipated collaborative event where heroic individuals rappel down the side of the Historic Genetti Hotel in support of the YWCA, the River Valley Regional YMCA or the Williamsport Area School District Education Foundation. The day was complete with perfect weather and nearly 80 rappellers for the three agencies. We raised nearly \$40,000 specifically for the YWCA thanks to the 26 brave edgers who were ready to take us to new heights.

Women of EXCELLENCE

NOVEMBER 5, 2020

In November, we quickly adapted to new methods of recognizing women of our community as we virtually hosted Women of Excellence. From hand delivering meals to sharing in intimate receptions with the honorees, we simply celebrated the passion, inspiration, and dedication our nominees possess. The event raised over \$17,000, honoring 13 Women of our community and 7 Young Women from our local school districts. Maddie Dunlap was named Wise Woman of the Year and reminded us just how overflowing our community is with women who are devoted to giving back.



10TH BIENNIAL YWCA

GALA & AUCTION

JUNE 4TH, 2021



In June, we were thrilled to bring a new life to our bi-annual event, the Gala & Auction. Taking place on the front lawn of the Park Place, our building provided the perfect backdrop, boasting 100 guests attending in-person and 30 showing their support virtually. With 22 experienced-themed packages that were auctioned off we celebrated raising over \$50,000 and look forward to bringing it back in 2023!



Boutique Manager Kahlie DeHotman saw record-breaking earnings during an uncertain retail year

PURCHASE WITH PURPOSE

The Boutique



To say it's been a difficult year would be an understatement. Despite unprecedented business closures, occupancy limits, and masking, The Boutique was able to accomplish an amazing feat during the 2020-2021 year: the highest total annual sales in its 8-year history, bringing in \$65,987 for YWCA Northcentral PA programming!

The Boutique Manager Kahlie DeHotman and her team of 40 volunteers work hard and are committed to presenting a unique shopping experience for customers, clients, and residents.

"We are so lucky to have such incredible support from our donors and customers," DeHotman said.

"They helped us not only survive, but thrive in a time when many other businesses our size were closing their doors for good. We can't have the successes we do if we don't have a strong base to support us. So this year, we owe it all to them."

The value of The Boutique is difficult to express because it truly improves the lives of so many people in so many ways. Of course, the most important services The Boutique provides are a dependable source of income to support our YWCA shelters, and desperately needed clothing free of charge for clients who arrive with nothing.

In addition to serving clients and residents, The Boutique affects our community on a multitude of levels. Everyone from students to retirees can enjoy the opportunity to earn volunteer hours, gain job experience, or just enjoy a fun and social environment. The Boutique also provides an affordable and welcoming shopping alternative for all and helps our environment by keeping clothing out of landfills.

Creations of Courage

Creations of Courage is a line of handbags and home goods handcrafted on site at the YWCA Northcentral PA by a group of four volunteer seamstresses. These talented women use donated fabrics and recycled materials to create unique and limited quantity purses, handbags, wallets, backpacks and so much more.

During the 2020-2021 year, Creations of Courage produced sales of \$2,202.63. This brought their total sales to \$29,271.93 since the group began designing! All sales help fund YWCA shelters.

"I think it's important to give back and to help others," said Linda Boose, volunteer and founder of Creations of Courage.

"Volunteering at the YWCA provides me an opportunity to do that and it's enjoyable and rewarding. I am glad to indirectly help women improve their situation and their lives through the programs the YWCA offers to them."

Creations of Courage items can be found in The Boutique, Rust & Shine, and Patinaz in Williamsport.



Cinderella's Closet

Cinderella's Closet helps make dreams come true for local students by offering prom gowns, shoes, and accessories for a low cost.

The highly anticipated event ensures that costs associated with attending prom are not a financial burden on a family by offering an exceptional fairytale gown-shopping experience at no more than \$15.

The annual event offers hundreds of dresses in all sizes, styles and colors, an assortment of shoes, jewelry, purses, and other accessories to ensure every student has the opportunity to feel beautiful and confident.

In addition to having a nearly private shopping opportunity, the experience is enhanced by Fairy Godmothers who assist the students in their search for the perfect ensemble. During the 2021 prom season, 118 students participated in Cinderella's Closet. DeHotman estimated that about 75% of those students had their gowns paid for by Fairy Godmothers and donors from the community.



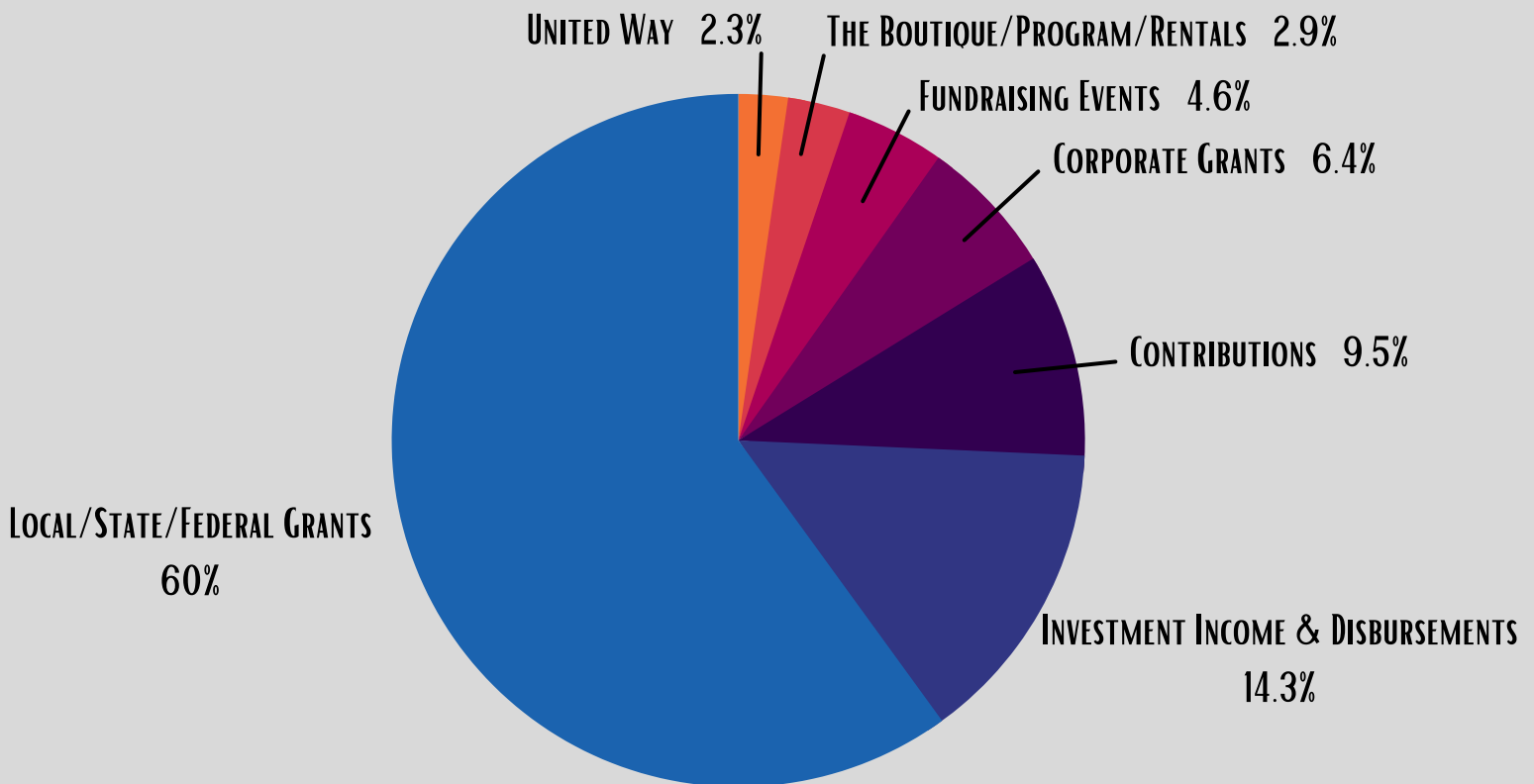
FINANCIAL OVERVIEW

The 2020-2021 Fiscal Year was a successful year. Revenue totaled \$2,821,273. This along with our ending Net Income of \$683,454 proves just how highly successful it was. Revenue by class was as follows: Contributions \$266,965, Fundraising Events \$129,277, Lycoming County United Way Grants \$65,253, Corporate Grants \$181,770, Local/State/Federal Grants \$1,692,697, The Boutique/Programs/Rentals \$80,993 and Investment Income/Disbursements \$404,319.

Sixty percent of our total revenue is derived from Local, State, and Federal Grant Contributions: \$1,692,697. Program and Fiscal leadership work diligently to ensure the YWCA taps into every funding stream readily available to satisfy our mission. Every dollar secured through our revenue streams directly benefit our service population and community at large.

Fourteen percent of our total revenue is comprised of development efforts, which includes Investment Income of \$404,319. Furthermore, 9.5% are Contributions: \$266,965. We continue to raise awareness within the community, in hopes of securing additional funding which will foster discretionary spending aimed to meet the individual needs of those we serve.

YWCA SUPPORT & REVENUE BY CLASS



In 2020-2021 Expenses totaled \$2,137,819. Expenses by department are as follows: Administration/Health \$414,159, Boutique \$61,028, Liberty House \$482,844, Wise Options \$1,179,789. Liberty House and Wise Options expenses are comprised of emergency shelter, rapid rehousing rental payments, relocation assistance, emergency financial assistance for food, hygiene items, and clothing, transportation assistance, occupancy related costs: bedding, furniture, cleaning supplies, 24/7 crisis hotline, individual case management and systems' advocacy, legal advocacy, and much more.

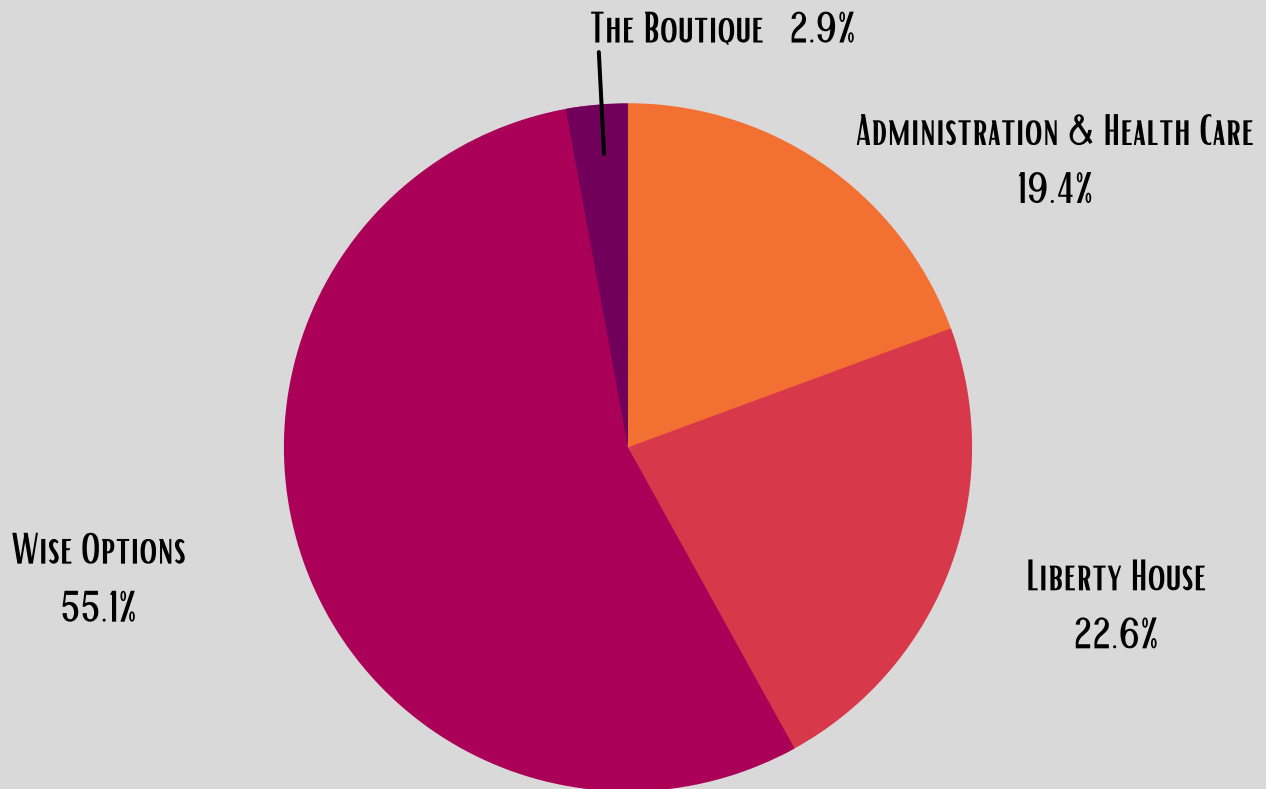
knowing that our employees are the life blood of our organization, Payroll, Taxes and Benefits continues to be our largest expenditure. No other cash expenditure was over 5.0%.

Depreciation (Non-cash) was the second highest expenditure at \$164,284, 7.7%.

Capital Expenditures of \$234,205 were spent to improve the facility in 2020-2021.



EXPENSES BY DEPARTMENT





Circle of Champions Giving Society members are loyal, generous friends of the YWCA. Their leadership giving and deep commitment to the organization set an example, inspire others, and make a significant impact in the YWCA Northcentral PA's mission to Empower Women and Eliminate Racism.

Circle of Champions members will help address the immediate needs of those we serve in a tangible way; and at the same time, establish a permanent endowment providing a legacy of giving by reinvesting and strengthening the YWCA's programs.

Junior Associate

Any individual under the age of 18 may become a Junior Associate of the Circle of Champions with an annual contribution of \$25.

- KATIE DOEBLER**
- LEXI GREEVY**
- RORY ODEN**
- SAMANTHA MACHMER**
- STEPHANIE STEINBACHER**

Annual Supporter

With your annual gift of \$125 or more to the YWCA Circle of Champions, you solidify the groundwork upon which lives are saved. Each contribution ensures that joy and dignity are always available inside the doors of the YWCA.

- | | | | | | |
|--------------------------|----------------------------|-------------------------|----------------------------|------------------------------|------------------------------|
| AUDREY ALBRIGHT | NICOYA CATINO | MARTHA HUDDY | SUSAN MCCUSKER | ROBIN READ | EIMAN TUFFAHA |
| STEFANIE ALLISON | SHARON CLAPPER | LYNEAH HUDOCK | SUZETTE MEYER | MARGIE SHAW | ALMA VERZELLA |
| KRISTEN AVERY | RACHAEL CLARK | NICOLE IPPOLITO | ERIN MILLER | MARY SIEMINSKI | MALLORY WEYMER |
| BARBARA BARRETT | RUTHANNE CROTTY | MARY ANN JOHNSON | SUSAN MYERS | VANESSA SLAUGHTER | AUSTIN WHITE |
| GREG BELL | DOREEN DECKER | CHRISTINE KAISER | DOLLY ODEN | BECCA SLOCUM | MONICA WHITMOYER |
| KATIE BELL | BONETIA DODGE | JOANN KAY | DIANE PAGE | LAURA SMITH | JONI WOMELDORF |
| JANE BIXLER | JANET DURRWACHTER | RACHEL KIRK | MEGAN PAGE- DAYHOFF | DIANE STANZIONE | AMANDA WRIGHT |
| ASHLET BOGART | SHIRLEY DURRWACHTER | KIMBERLY KIST | FRANK PELLEGRINO | MOLLY STEELE- SCHRIMP | ED WRIGHT |
| JESSICA BOWER | LINDA ECK | NANCY LADY | MARSHA PERSON | NANCY STORY- SOMERS | MARGERY WURSTER |
| DEBRA BOWES | GERALYN FAUSNAUGHT | RENEE LAYCHUR | JENNY PICCIANO | DORIE TEUFEL | KAREN YOUNG |
| KATHY BROWN- WEHR | JOAN GINGRICH | BARBARA LYTLE | MARISA RAU | BARBARA THOMAS | CHERYL YOXTHEIMER |
| SUSAN BURNS | JO- ANN GORSKI | DONNA MAULE | WALTER RAU | ALICE TROWBRIDGE | KATHY ZAKARIAN |
| | | | | | KLUGE INSURANCE GROUP |



Change Lives in Our Community

Each year, the YWCA Northcentral PA impacts thousands of lives. From those seeking safety as they flee abusive situations or women experiencing homelessness as a result of a disabling condition, our services remain available 24 hours a day, 7 days a week.

Your support makes life possible and worth living for all those in the surrounding area who need the YWCA Northcentral PA.

Advocate of Justice

With a commitment of \$5,000, you continue the YWCA legacy by building an endowment which will, in perpetuity, strengthen the life-changing programs of the YWCA.

MARGARET PIPER

DAWN LINN

FRANI DOHERTY

BRITTANY FISCHER

Champion of Peace

By supporting the YWCA endowment with a \$10,000 commitment, you have a guiding voice to be a leader of change by making funding decisions, impacting the women, men and children who rely on the YWCA to rebuild their lives.

KAY ERTEL

BARBARA WASCHER

JULIEANNE STEINBACHER

LINDA BOOSE

ALLISON SAVOY- STAIMAN

MARTHA GANDY

KEITH & JENNIFER KUZIO

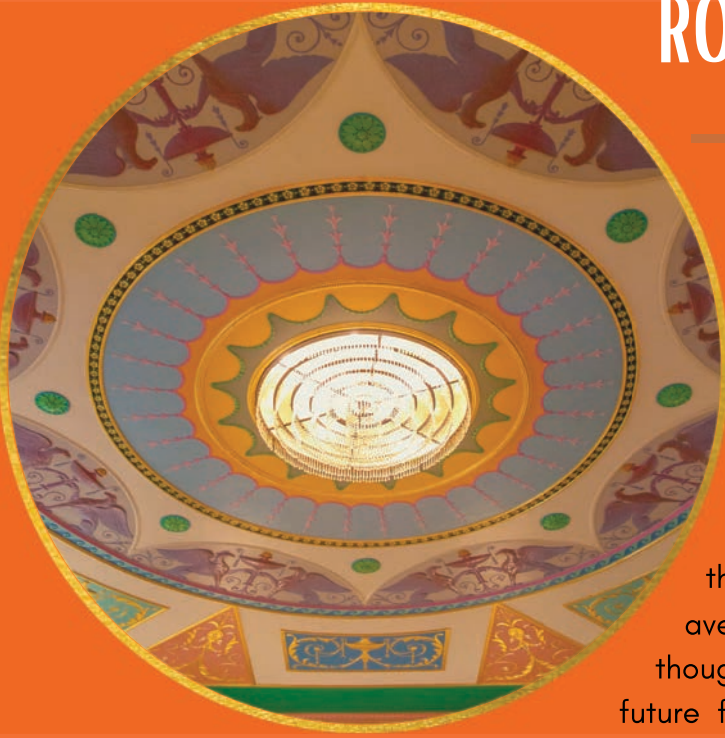


Your Commitment
Means So Much
To So Many!

LEARN MORE ABOUT BECOMING A YWCA MEMBER BY VISITING ONLINE

WWW.YWCAWILLIAMSPORT.ORG

ROTUNDA LEGACY SOCIETY



The YWCA Rotunda Legacy Society recognizes those who have made a commitment to ensure the safety of children and women for generations to come by making a planned gift to the YWCA Northcentral PA through their estate.

Planned Giving is, in its simplest form, a sizable donation given over time or as part of a donor's estate.

It enables donors to make larger financial contributions than they could make from ordinary income, providing an avenue to leave a more impactful legacy than they ever thought possible. Each planned gift provides a promise of future funding for the YWCA and reassurance in maintaining funding sources.

MARGARET PIPER

LINDA BOOSE

KAY ERTEL

BARBARA WASCHER

ANONYMOUS

BARBARA BARRETT

DORIS TEUFEL

JAMES W. BOWER, SR. & CYNTHIA MENGEL BOWER

*"The true meaning of life
is to plant trees,
under whose shade you do
not expect to sit."*

~NELSON HENDERSON



Please visit our website to learn more about how you can make a planned gift to the YWCA's Rotunda Legacy Society.

www.ywcawilliamsport.org

LIFETIME GIVING SOCIETY

The YWCA Lifetime Giving Society recognizes those who share their hearts with the YWCA and display their commitment to ensuring a bright future to all those striving to overcome adversity. Members of the Lifetime Giving Society are recognized for their support of the YWCA Northcentral PA totaling \$10,000 or more.

JAMES BOWER. SR.

BARBARA HUDOCK

KAY ERTEL

BARBARA WASCHER

CHARLINE PULIZZI

KEITH KUZIO

MARTHA GANDY

JULIEANNE STEINBACHER

CAROL SAVOY

ANITA GIBBONS

ALLISON SAVOY- STAIMAN

ALEX & JENNIFER ROY

MARGARET PIPER

JAMES BOWER. JR.

LINDA BOOSE

NORMAN WENGERT

FRANK PELLEGRINO



~MOTHER TERESA

TRIBUTE GIFTS

Celebrating a loved one with a gift made in their name is a beautiful way to make a meaningful tribute to the honoree while simultaneously helping someone in need.

GIFTS IN MEMORY

JANET ROAN

- BY - JO ANNE ADAMS

- BY - DOUG ROAN

CAROL A. WEISENBURGER

- BY - BETTE TOKARZ

- BY - PATRICIA & KAREN SCHRAMM

- BY - ANONYMOUS

GIFTS IN HONOR

JANET DURRWACHTER

- BY - CHRISTOPHER YOUNG

LINDA ECK

- BY - S. REBECCA HIBSCHMAN



YWCA COMMUNITY PARTNERS, CORPORATE SPONSORS & GRANT FUNDERS

The YWCA offers immense gratitude to our Community Partnerships, Funders, Grant Sources and Corporate Sponsors from within the community and across the county who help allow us to make a difference in the lives of those we serve. Every investment to the YWCA through collaboration, partnership, and financial support helps us to make tremendous progress and we thank each and every one who have given.

ABRAM M. & DOROTHY M. SNYDER FOUNDATION

ADELOPHOI VILLAGE

ADULT PROTECTIVE SERVICES

ADULT & JUVENILE PROBATION

AIDS RESOURCE

AMERICAN RESCUE WORKERS/SAVING GRACE

ASHLER MANOR

BAKER TILLY VIRCHOW KRAUSE. LLP

CAREERLINK

CENTRAL PA FOOD BANK

CHILDREN & YOUTH SERVICES

CLEAR VISION

CRIMINAL JUSTICE ADVISORY BOARD

CROSSROADS COUNSELING. INC.

DEPARTMENT OF HOUSING AND URBAN DEVELOPMENT

DOMESTIC VIOLENCE TASK FORCE & FATALITY REVIEW TEAM

DUI TASK FORCE

FAMILY PRACTICE CENTERS

FIRST COMMUNITY FOUNDATION PARTNERSHIP OF PENNSYLVANIA PEARLS WITH A PASSION

FRIENDS OF THE JAMES V. BROWN LIBRARY

GENESIS HOUSE

GREATER WILLIAMSPORT RIDE SHARE ASSOCIATION

HARRY PLANKENHORN FOUNDATION

HOUSING ASSISTANCE PAYMENT

HOPE ENTERPRISES. INC.

HUDOCK CAPITAL GROUP

HUMAN TRAFFICKING OUTREACH TEAM

JAMES V. BROWN LIBRARY



JUNIOR LEAGUE OF WILLIAMSPORT
KIWANIS CLUB OF WILLIAMSPORT
LARSON DESIGN GROUP
LYCOMING COLLEGE
LYCOMING COLLEGE COORDINATED COMMUNITY ALLIANCE
LYCOMING COUNTY ADULT & JUVENILE PROBATION
LYCOMING COUNTY COORDINATED SERVICES TASK FORCE
LYCOMING COUNTY COURTS
LYCOMING COUNTY DISTRICT ATTORNEY
LYCOMING COUNTY EMERGENCY SOLUTIONS GRANT
LYCOMING COUNTY HEALTH IMPROVEMENT COALITION
LYCOMING COUNTY HOUSING AUTHORITY
LYCOMING COUNTY JOINDER BOARD
LYCOMING COUNTY LAW ENFORCEMENT ASSOCIATION
LYCOMING COUNTY PRISON & PRE- RELEASE CENTER
LYCOMING COUNTY UNITED WAY
M&T CHARITABLE FOUNDATION
MCCORMICK LAW FIRM
MENTAL HEALTH & INTELLECTUAL DISABILITY
MUNCY BANK & TRUST
MUNCY STATE CORRECTIONAL INSTITUTION
NORTH CENTRAL SIGHT SERVICES. INC.
NORTH PENN LEGAL SERVICES
PA- 211
PA ALLIANCE AGAINST THE TRAFFICKING OF HUMANS
PA COALITION AGAINST DOMESTIC VIOLENCE
PA COALITION AGAINST RAPE
PA COMMISSION ON CRIME & DELINQUENCY
PA HOUSING AFFORDABILITY & REHABILITATION ENHANCEMENT FUND
PENNSYLVANIA COLLEGE OF TECHNOLOGY
PENNSYLVANIA STATE PAROLE
RIVER VALLEY HEALTH & DENTAL
SEXUAL ASSAULT RESPONSE TEAM
SPHERION STAFFING
STEP
TIMBERLAND APARTMENTS
TRANSITIONAL LIVING CENTERS
UPMC SUSQUEHANNA
WEST BRANCH DRUG & ALCOHOL ABUSE COMMISSION
WILLIAMSPORT AREA SCHOOL DISTRICT
WOODLANDS BANK
YWCA HARRISBURG
YWCA PLANNING COMMITTEE

Thank You For
Your Support!



SAYING GOOD-BYE

— And Thank You!

Here at the YWCA Northcentral PA, we have the opportunity to meet amazing people every day who are passionate about their work and who show up each day ready to make a difference. Every once in a while, however, we realize that we meet these people as they travel on their journey and we have to say good-bye. Without their compassion and hard work, we wouldn't be where we are today. So while it is difficult to see them go, we wish them well on their next adventure!



ALLEN GOODBROD
FACILITIES DIRECTOR



SHAFI FLEMING
LIBERTY HOUSE CASE MANAGER



CHLOE PHILIPEN
COUNSELOR



After 30 years of dedication, Allen Goodbrod has officially retired as the YWCA's Facility Director. Since 1991, Allen has maintained the 70,000 square foot facility and has been instrumental in daily needs as well as major renovations.

Allen and his YWCA family recently celebrated his retirement with gifts, his favorite treats as well as a meal at The Villa, one of Allen's favorite restaurants.

We thank Allen for his many years of service and wish him all the best in his next chapter!

A YEAR OF TRANSFORMATION

Every year, the YWCA has cause for celebration. We celebrate the lives we have touched and all of the hard work to ensure that everyone has a safe and comfortable home to walk into. Just like those we serve, the building needs nurtured. We want the next generation of those passing through our doors to marvel at its history and to imagine the lives that were helped. We are charged with honoring the history, of those that came before us; but also, to strive to build for the future. It is our privilege and our honor to carry forth their legacy.

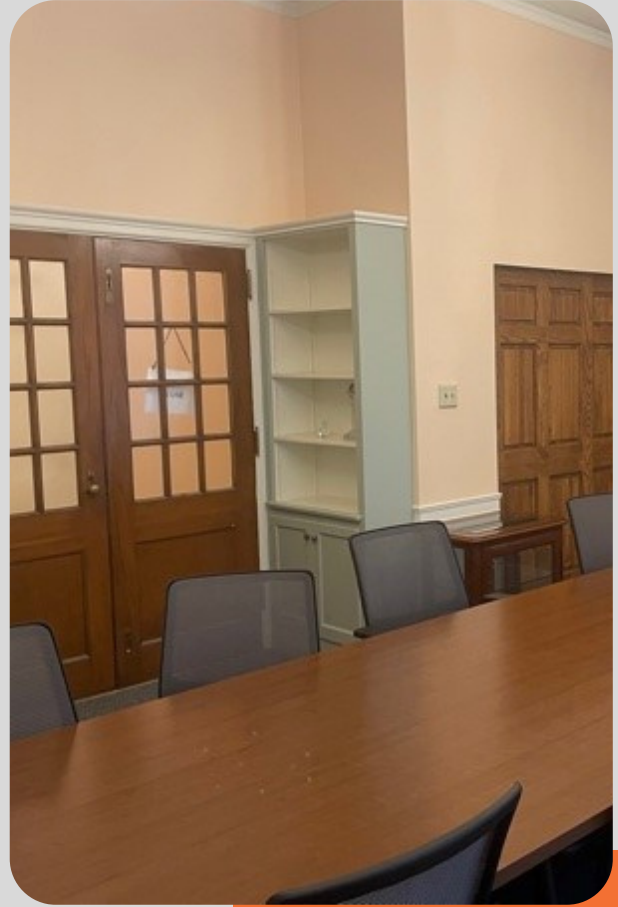
*Thank you
for being part
of our journey!*



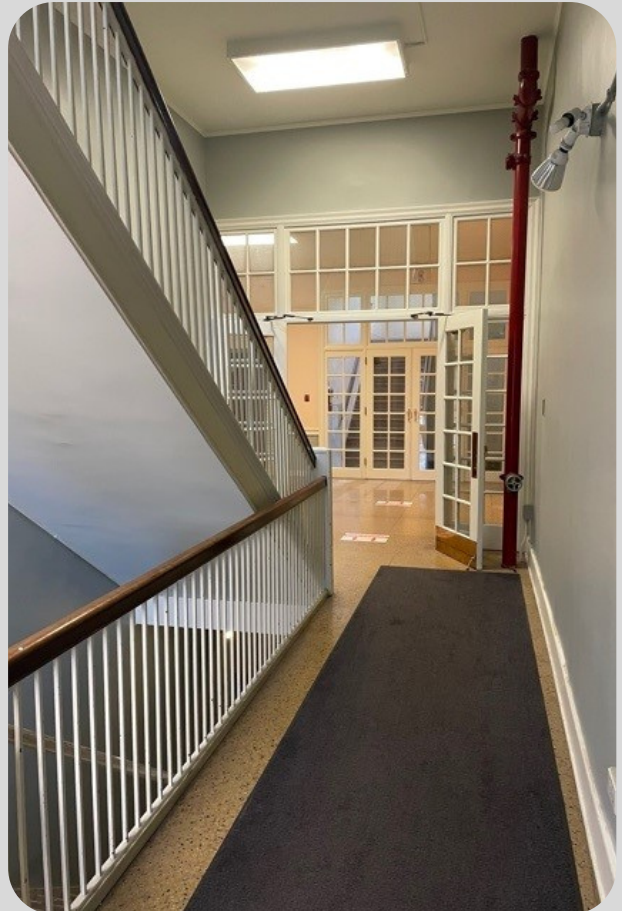
A YEAR OF TRANSFORMATION



A YEAR OF TRANSFORMATION



A YEAR OF TRANSFORMATION



A YEAR OF TRANSFORMATION





YWCA NORTHCENTRAL PA

815 W. Fourth Street, Williamsport, PA 17701
(570) 322-4637 | www.ywcawilliamsport.org

24/7 Crisis Hotline 1-800-326-8483

Thank you to all of the supporters, members and volunteers of the YWCA. Because of your contributions, the YWCA remains a strong and vibrant resource to save and improve lives in Lycoming County.



FOLLOW THE YWCA NORTHCENTRAL PA ONLINE FOR NEWS AND CELEBRATIONS ALL YEAR LONG!