



**eliminating racism  
empowering women**

**ywca**  
northcentral pa

**125** YEARS OF SERVICE  
8102-7681

## Letter from the President

Happy birthday to the YWCA Northcentral PA! For 125 years this organization has been at the forefront of supporting women in Lycoming County through its programs focused on empowerment, family, education and health. We would not have made it to this massive milestone without the countless number of donors who have helped further the organization's mission. The YWCA has always been, and still remains, a place where lives are changed and saved every single day.

**Wise Options** – For over 40 years Wise Options has been a safe haven for women, children and men who are victims of domestic violence and sexual assault. These free, essential services include an emergency crisis hotline, shelter, counseling, legal accompaniment and relocation services. Our community educator interacts with people of all ages to inform them about our programs for free. These resources cost nothing because of our selfless donors who generously give to support the program.

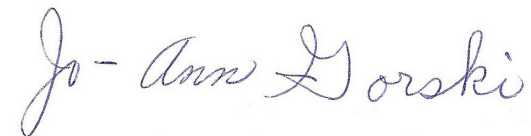
**Liberty House** – Thanks to our altruistic donors, this year Liberty House celebrated 15 years of providing residence for women and women with children. Each client works with a case manager who helps them get back on their feet by finding employment, opening a savings account and locating permanent housing. The case managers support their residents to accomplish their goals so they can gain confidence in themselves and become self-sufficient.

**The Boutique** – For five years The Boutique has been a beloved clothing shop in the community that provides high-quality clothing at affordable prices. We are thankful for the hundreds of clothing donations we receive each year that are given to

clients for free or kept for customers to purchase. Without the support of customers and donors, The Boutique would not be able to provide necessary funds for Wise Options and Liberty House without the generous donations from donors, the patronizing of customers and its dedicated volunteers that help run it.

To everyone who has moved the YWCA forward to where we are today, I personally would like to thank you. Serving Lycoming County for 125 years has come with ups and downs but the YWCA has always bounced back thanks to the resilient, dedicated individuals who donate their time, money and guidance to the organization.

I would like to extend a special thank you to the Board of Directors, the Board of Trustees and most of all to the staff who make each day a new possibility for a client looking to overcome abuse or homelessness.



Jo-Ann Gorski, President of the Board of Directors

**The YWCA Northcentral PA is  
dedicated to eliminating racism,  
empowering women and promoting  
peace, justice, freedom and dignity for all.**



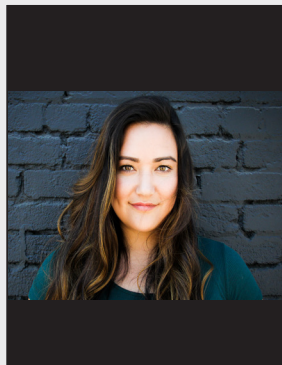
## Wise Options

**1147**

**adult and child survivors of domestic violence and sexual assault served**

**406**

**PFA screenings**



### Safe at last

Bev suffered from severe emotional abuse from her spouse. He threatened to kill her so her and her daughter fled to Wise Options for safety. She now has a PFA against him and finally feels at peace in her own home.

### The ups and downs

Sandy was in and out of rehab and the shelter every few months. She came to the YWCA to stay away from her abusive mother. After getting sober, she received public housing.



**“Talking to the shelter staff helped build my self-esteem and find the strength within myself. The tools they gave me will benefit me for the rest of my life.”**  
-- Janet, former Wise Options client



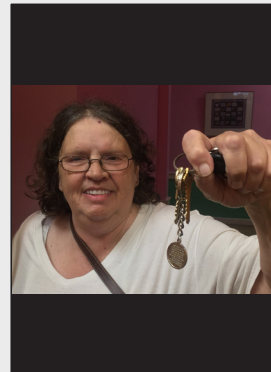
**“Being in Liberty House is the best thing that could have happened to me. The staff have supported me to reach my goals, stay committed to recovery and be a better mom to my son.” -- Kendall, Liberty House client**



## **Liberty House**

# **120**

**women & children found safety, hope, a new lease on life and the tools to start over**

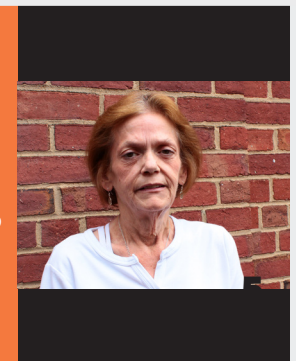


### **Bouncing back**

**An injury lead to Brenda losing her job and home. Though she meet many challenges along the way, she never gave up. Now she has her own place and is working again.**

### **Rebuilding bridges**

**After a 13-year struggle with substance abuse, Lynn came to the YWCA with nothing. In the program she found employment, got her own place and rebuilt relationships with her family.**

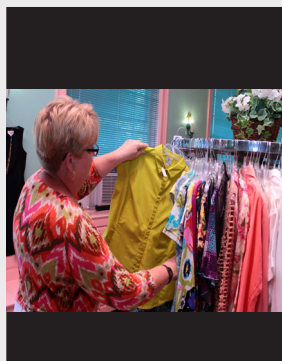




## The Boutique

**631**

**donations last year  
provided comfort  
and joy for YWCA  
clients and  
affordable shopping  
for our community**

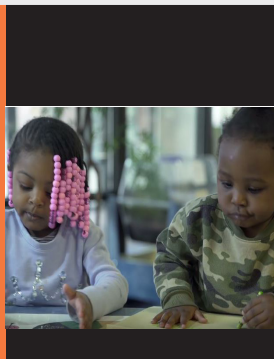


### Make a difference

**Our volunteers are what keep The Boutique going day in and out. They give their time quality-checking donations, stocking the racks and providing top notch customer service.**

### Clothes for the family

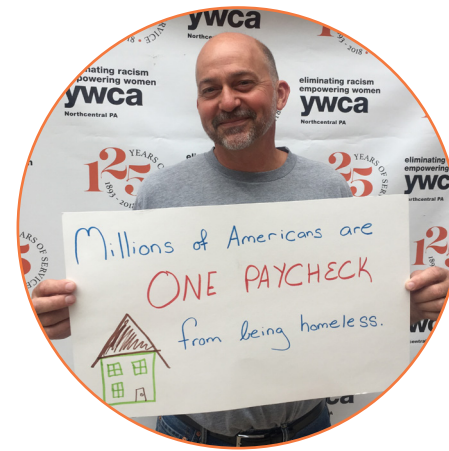
**Often times clients come here only with the clothes on their backs. Through The Boutique, children and mothers can get everything they need.**



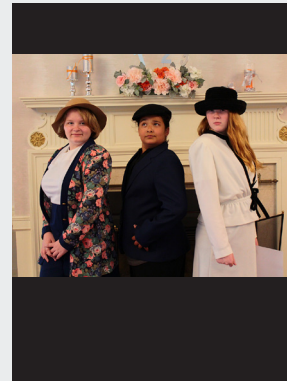
**“I had been looking for the perfect outfit to wear to my friend’s big summer picnic. At The Boutique I found an entire outfit for a great price!” -- Amber, Boutique customer**



**Serenity, left, and Amaliah, right, of Girls First volunteered at the Race Against Racism 5k directing runners on the route and cheering everyone on.**



**Community Education**  
**9,301**  
**Lycoming County residents learned how to prevent violence**



**Remembering Honor**  
Twelve middle school students discussed topics such as womens' rights, culture and the LGBTQ+ community through fun, engaging activities during Remembering Honor.

**Spreading Awareness**  
Throughout Sexual Assault Awareness Month in April, our wreath traveled the city to spread awareness about sexual assault and Wise Options.

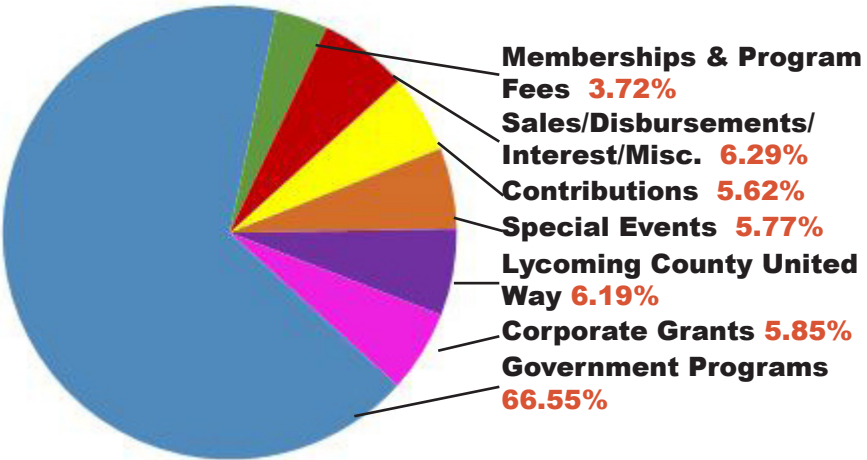


2017-2018

# FINANCIALS

SUPPORT & REVENUE

Contributions	\$88,911.16
Special Events	\$91,326.48
Lycoming County United Way	\$97,825.88
Corporate Grants	\$92,586.55
Government Programs	\$1,052,533
Memberships / Program Fees	\$58,892.48
Sales/Disbursements/Misc.	\$99,481.93
<hr/>	
<b>Total support*: \$1,581,557</b>	



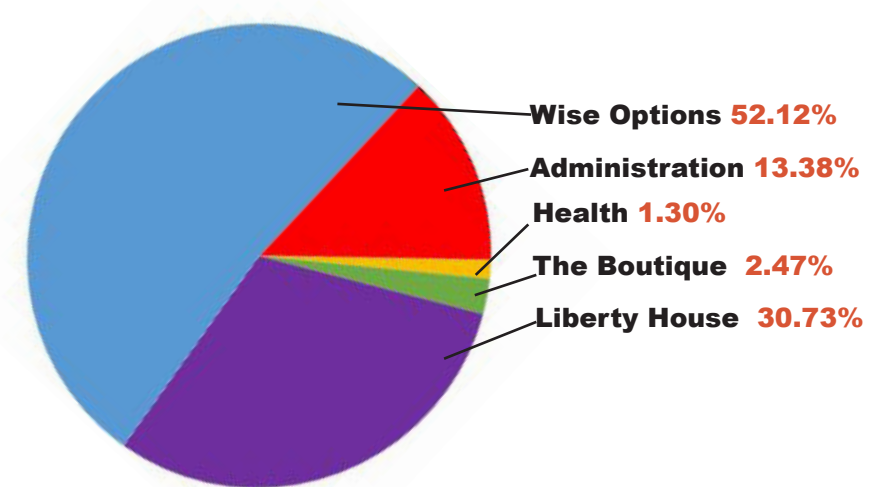
\* Unaudited Numbers

2017-2018

# FINANCIALS

EXPENSES

Administration	\$210,774.40
Health Promotion Services	\$20,454.63
Boutique	\$38,879.09
Liberty House	\$484,122.66
Wise Options	\$821,006.15
<hr/>	
<b>Total expenses*: \$1,575,236</b>	



\* Unaudited Numbers

2017-2018

## COMMUNITY PARTNERS

**WE WOULD LIKE TO THANK OUR COMMUNITY PARTNERS  
FOR THEIR GENEROUS INVESTMENT OF FUNDS, SERVICES  
AND SUPPORT OF THE YWCA PROGRAMS AND MISSION.**

Abram M. and Dorothy M. Snyder  
Foundation  
Acme Barbecue  
AIDS Resource, Inc.  
Alpha Rho Master Beta Sigma Phi  
American Legion Post #35  
American Rescue Workers  
Baker Tilly Virchow Krause, LLP  
Barrel 135  
Beiter's Home Center  
Bic's Water Sports  
Bob's Disposal Service  
Bullfrog Brewery  
Cakes by Kate  
Carpenter Pumpkin Farm, LLC  
Cioffi Wealth Management  
(Ameriprise Financial)  
City Hall Ventures LLC  
Clyde Peeling's Reptiland  
Community Arts Center  
Compu-Gen Technologies  
Cowden's Family Market  
Creative Cakes by Denise  
DBA J.L. Winters  
Deb Wheeler  
Delta Kappa Gamma, Omicron  
Chapter  
Diamond Square Market Deli Cafe  
Don Waltman's Meats  
Elite Feet Shoe Store  
Elmcroft  
Erb's West End Market  
Erie Materials Inc.  
Erie Materials Inc./Williamsport  
EuroOptic, LTD  
Family Practice Center, Hughesville  
McDonald's

First Community Foundation  
Partnership of Pennsylvania  
FNB Investment Advisors  
Fraternal Order of Eagles #970  
Frey's Commissary, Inc  
Frosty Valley  
Genesis House, Inc.  
Giant Food Stores  
Grammy Sue's Cakes & Cookies  
Halls Florist  
Hampton Inn & Suites, Faxon Exit  
Hoby's Hoagies & Pizza  
Hometown Floral  
Hoopla's Family Fun & Grill  
Howard Kahler VFW Post 844  
Ichiban Japanese Restaurant  
In Balance  
Inspirations Hair & Nail Designs  
It's My Party Store  
J.B. Gibbons Construction  
James V. Brown Library  
Janitors Closet  
Jennifer Engel Designs  
Jersey Shore Area Lioness Club  
Jersey Shore State Bank  
Joe's Pizza  
Johnson's Cafe  
Junior League of Williamsport  
Kiwanis Club of Williamsport  
Kluge Insurance Group  
Lamar Advertising  
Larson Design Group  
Le Jeune Chef  
Liaz Salon & Day Spa  
Liberty Group  
Little League  
Lou-Rose LLC

Lycoming College  
Lycoming County United Way  
Lycoming-Clinton Joinder Board  
M&T Bank  
Martina Guerra Goldsmith  
Marty's Bicycle Shop  
Maseto's Deli  
McCarthy Tires  
Meagan's Box Foundation  
Mid-State Beverage  
Moon & Raven Public House  
Morrone's Cafe & Lounge  
Muncy Bank and Trust Company  
Murphy, Butterfield, and Holland  
National Active and Retired Federal  
Employees Chapter 412  
Newberry Lionesses Club  
North Central Sight Services  
Old Corner Hotel  
Papa John's Pizza  
Parsons Hot Glass Studio  
Pennsylvania College of Technology  
Pennsylvania State Police  
Personal Appearance  
Peter Herdic House  
Phi Mu Delta  
Pillow Talk  
Port Elevator, Inc.  
Post #1 Home Association  
Public Artworks  
Re/Max Edge Volleyball Team  
Red Lobster  
Rev. Larry K. Waltz, Moderator  
Revive Medical Spa  
River Valley Health & Dental Clinic  
River Valley Transit  
Rotary Club of Williamsport  
Sam's Club  
Selective Insurance  
Shop, Chop & Bowl  
South Williamsport Area School  
District  
South Williamsport UMC  
Special Occasion Florals  
Spherion Staffing  
Superior Plus Energy Services  
Susquehanna Valley Pediatrics LTD  
Target  
Tebbs Brothers Landscaping

TelecomPioneers  
The Cell Block  
The Harry Plankenhorn Foundation  
The Hideaway Facial Spa  
Thompsons Outdoor Power  
Equipment  
Timeless Interiors  
Tony's Deli  
Unique Industries  
VFW Post #7863 Color Guard  
Walmart #1887  
Waterville Tavern  
We Are Women Helping Others  
Wegmans  
Weis Markets  
Why Not You Ministries Warehouse  
Williamsport Candy Company  
Williamsport Crosscutters  
Williamsport Family Medical Center  
Williamsport Music Club  
Williamsport National Organization of  
Women  
Williamsport Sun-Gazette  
Woodlands Bank  
XI ETA THETA of BETA SIGMA PI  
YMCA Williamsport Branch  
Young Industries Inc.  
Young Men's Democratic Club of  
Lycoming County, Inc.



## YWCA NORTHCENTRAL PA

2017-2018

# Circle of Champions Membership Society

YWCA CHAMPIONS ARE TRUE HEROES FOR THEIR  
COMMITMENT SAFETY, JOY AND HOPE FOR THOSE IN NEED.  
CHAMPIONS OF PEACE AND ADVOCATES OF JUSTICE HAVE  
MADE A LIFETIME COMMITMENT TO CARING

### CHAMPIONS OF PEACE

Linda Boose  
Martha Gandy  
Allison Staiman  
Julie Steinbacher

### ADVOCATE OF JUSTICE

Dawn Linn

### ANNUAL MEMBERSHIP

Jane Bixler  
Ashley Bogart  
Jessica Bower  
Kathy Brown-Wehr  
Susan Burns  
Nicoya Catino  
Sharon L. Clapper  
Ruthanne Crotty  
Boneita Dodge  
Linda Eck  
Kay Ertel  
Joan Gingrich  
Jo-Ann Gorski  
Nicole Ippolito  
MaryAnn Johnson  
Joann Kay  
Kluge Insurance Group

Keith S. Kuzio  
Sue McCusker  
Suzette Meyer  
Erin Miller  
Diane Page  
Margaret Piper  
Walt Rau  
Robin A. Read  
Diane Stanzione  
Doris Heller Teufel  
Phillip & Barbara Thomas  
Alma Verzella  
Barb Wascher  
Mallory Weymer  
Austin White  
Joni Womeldorf  
Amanda Wright  
Karen Young



## 2017-2018 Special Events

### Women of Excellence | November 1, 2017

The YWCA's ninth annual Tribute to Women of Excellence celebrated 13 strong, selfless female leaders who serve our community each and every day. Sue Young was honored as Wise Woman of the Year.

### Chair.ity Auction | April 13, 2018

Chair.ity Auction's eighth biennial event brought together our donors and supporters for a special evening to benefit the YWCA. With packages such as vacations, furniture and unique experiences, it was a night to remember.

### Race Against Racism & Unityfest | June 9, 2018

The Race Against Racism 5k raised essential funds for our racial justice initiatives while Unityfest was a celebration of the diversity in our community.



## **YWCA NORTHCENTRAL PA**

2017-2018

### **YWCA MANAGEMENT**

YWCA MANAGEMENT AND STAFF ARE COMMITTED TO FULFILLING THE MISSION THROUGH QUALITY SERVICE, CARE AND SUPPORT TO THOSE WE SERVE.

#### **LEADERSHIP**

Dawn Linn

*Chief Executive Officer*

#### **DIRECTORS**

Allen Goodbrod  
Amber Morningstar  
Steve Parlente  
Anna Thompson

*Facility Director*  
*Program Director*  
*Finance Director*  
*Communications &  
Development Director*

#### **MANAGERS**

Kahlie DeHotman  
Heather Harris  
Heather Reeder  
Erin Scholl

Monica Whitmoyer

*Boutique Manager*  
*Housing Services Supervisor*  
*Direct Services Supervisor*  
*Advocacy and Prevention  
Supervisor*  
*Personnel/Purchasing  
Coordinator*

2017-2018

### **YWCA ADVISORY BOARDS**

THANK YOU TO THE MEN AND WOMEN OF OUR BOARDS AND COMMITTEES WHO DONATE COUNTLESS AMOUNTS OF TIME AND RESOURCES TO THE MANY PROGRAMS OF THE YWCA.

#### **BOARD OF DIRECTORS**

Jo-Ann Gorski  
***President***  
Kathy Brown-Wehr  
***Past President***  
Allison Staiman  
***Vice President***  
Nicoya Catino  
***Secretary***  
Susan Burns  
***Treasurer***  
Ashley Bogart  
Rachael Clark  
Megan Dayhoff  
Linda Eck  
Nicole M. Ippolito  
Joann Kay  
Sue McCusker  
Suzette Meyer  
Erin Miller  
Jenny Picciano  
Diane Stanzione  
Alma Verzella  
Barb Wascher  
Mallory Weymer  
Amanda Wright

#### **BOARD OF TRUSTEES**

Jessica Bower  
Carolyn Strickland  
Deb Bowes  
Karen Young  
Doreen Decker  
Kay Ertel  
Rachel Kirk  
Keith Kuzio  
Diane Page  
Margaret Piper  
Julie Steinbacher



## **YWCA Northcentral PA**

815 W. Fourth Street | Williamsport, PA 17701  
(570) 322-4637 | [www.ywcawilliamsport.org](http://www.ywcawilliamsport.org)

Thank you to all of the supporters, members and volunteers of the YWCA. Because of your kindness, the YWCA remains a strong and vibrant resource to save and improve lives in Lycoming County.

**eliminating racism  
empowering women**

**ywca**

northcentral pa



*The listings in this annual report reflect the 2017-2018 fiscal year. The YWCA Northcentral PA has taken great time and care in assembling this information. If you notice any discrepancies, please contact us at (570) 322-4637 ext. 159.*